



Leamington Marina



Pelee Island

SOUTHPOINT
TOURIST GUIDE

— The southernmost point of Canada —



Colchester Beach



Downtown Kingsville

Smart Moves Start
With a Conversation.

*Tasha
Slater*
REALTOR®

519.796.3102



THE KEYS
GROUP

BROKERED BY

JUMP
REALTY
BROKERAGE



tasha@thekeysrealtygroup.com



thekeysrealtygroup.com



TAYLOR FISH COMPANY



The **ONLY** place in
Windsor-Essex to
Catch • Cut • Coat & Cook
Fresh **Lake Erie Fish**
- all from the same family!

*Yellow Perch, Walleye, Shrimp,
Chicken & more
available in our retail store
and chip truck.*



CHIP TRUCK HOURS:
Wed - Sun 11:30 - 7:30
(May - October)

RETAIL STORE HOURS:
Mon - Fri 8:30 - 4:30 • Sat 9 - 5

**419 Erie St. S.,
Wheatley
519.825.7366**



Table of Contents

MAP	16
TOWNS	
LEAMINGTON	5
KINGSVILLE	14
COTTAM	19
COLCHESTER	20
HARROW	20
WHEATLEY	21
PELEE ISLAND	23
FESTIVALS & EVENTS	26
PARKS & RECREATION	28
ARTS & CULTURE	30

SOUTHPOINT TOURIST GUIDE is a division of Southpoint Publishing Inc.

194 Talbot Street East, Unit 1, Leamington, ON N8H 1M2

www.southpointpublishing.com

**NATURE BOATING ARTS & CULTURE FISHING
CYCLING LAKE FOOD & DRINK SUN RECREATION
BIRDING RELAXING FESTIVALS & EVENTS**

Your trusted source for Leamington events,
attractions, activities and more.

VISITLEAMINGTON.CA

Visit

LEAMINGTON



OVERVIEW

POPULATION: 29,700

- Leamington is home to the largest concentration of greenhouses in North America.
- Leamington is a popular area for birders, with large numbers of avian enthusiasts “flocking” to the area each May.

ATTRACTIONS

- Leamington Dock Promenade
- Leamington Marina
- Point Pelee National Park
- Sunset Amphitheatre
- Seacliff Park and Beach
- Mersea Park

FAQ

What are with the colourful lights at night?

If you happen to see the night sky glowing shades of pink or yellow, don't worry - we promise it's not an alien invasion. It's light coming from one of the local greenhouses.



Point Pelee National Park

For more information visit LEAMINGTON.CA or VISITLEAMINGTON.CA

SAME-DAY DENTURE REPAIRS

FREE CONSULTATIONS

If your dentures are cracked or missing a tooth, contact us for efficient same-day repair service.


Kristin Shreve Swayze, DD
DENTURIST/OWNER



Shreve & Strong
CLINICS

DENTURES AND ORAL SLEEP APPLIANCES

NEW LOCATION 221 Talbot Street West, Leamington

519.322.5900 | shrevedentureclinic.com | 





THANK YOU FOR

Visiting!

TREVOR JONES

MPP, CHATHAM-KENT—LEAMINGTON

Leamington
 Constituency Office
 115 Erie St. N., Unit B
 519-326-3367

Chatham
 Constituency Office
 111 Heritage Dr. Suite 100
 519-351-0510

RAY'S RIBHOUSE

BAR & GRILL

FUN, FRIENDLY ATMOSPHERE!



**COME SEE OUR
 NEW LOCATION!**



TUESDAY

Rayburger

WEDNESDAYS

1/2 Rack
 Rib Dinner

MONDAY

3pc Southside Chicken

\$1200
 after 4pm

4pc \$14

\$1200 after 4pm **\$1600** after 4pm

THURSDAYS

1 lb of Wings

\$1200
 after 4pm

SPECIALS EVERYDAY!
 Open Mon. - Wed. 11am - 9pm,
 Thur. - Sat. 11am -10pm,
 Closed Sunday



**246 TALBOT ST. WEST
 LEAMINGTON
 519-322-5940**

CHICKEN • RIBS • PERCH • PICKEREL • BURGERS



Leamington Arts Centre
Create. Sustain. Celebrate.

4 GALLERY SPACES ART SUPPLY SHOP FRAMING SHOP BAR + PATIO

Admission \$3 / 2 for \$5
FREE for LAC members, youth under 12,
exhibiting artists, Indigenous card holders,
support workers



ARTS
AT THE
MARINA
JULY 25 + 26



FRI JUNE 12 - SUMMER NIGHTS &
RETRO DELIGHTS
FRI JULY 10 - EATS, BEATS &
ART-FILLED STREETS
FRI AUG 14 - HARVEST, PLACE
& TASTE



72 Talbot St. W, Leamington | 519.326.2711
leamingtonartscentre.com

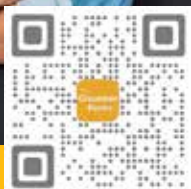
Shop Local
BUY CANADIAN!



OPEN

Proudly Canadian!

Chamber Perks
MOBILE APP™



318 Erie St. S., Leamington • 519.326.2721



LIVE RACING

SUNDAYS

AUG. 9 - OCT. 25

POST TIME: 1:00 PM

EVENTS • GIVEAWAYS

194 Erie St. N., Leamington (at the Leamington Fairgrounds)
www.lakeshorehorseraceway.com

The 
CLUB
Bar & Grill

LEAMINGTON PORTUGUESE COMMUNITY CLUB



**OPEN
TO ALL!**

*Serving
Portuguese &
Canadian Cuisine*



Office Hours:

Mon. - Fri. 9 am - 5 pm

Restaurant Hours:

Tues. - Sat. 11:30 am - 9 pm

Sundays - Open for
private events

- Live Music (indoors & out) • Car Shows
- Farmers' Market • Corn Hole
- Chase the Ace Weekly Draw
- Large Rental Hall Available

LeamingtonPortugueseCommunityClub.com

 217 TALBOT ST. WEST, LEAMINGTON • 519-326-5561 

- 18,000 sq ft Mall
- Collectibles
- Currency
- New to Mid-Century Items
- Jewellery
- Home Decor



Legacy Auctions

ANTIQUÉ RETAIL SHOP • CONSIGNMENT • AUCTIONS • CURRENCY

219 Talbot St W, Leamington Open Monday to Saturday 10:00 am - 5:00 pm

legacyauctions@gmail.com



legacyauctions.net

519-322-4427

FARM-TASTIC

FALL FUN FOR THE WHOLE FAMILY!



Celebrating 50 years of apple picking!

Free admission Monday-Friday. Admission rates apply Saturdays, Sundays, PA days and holidays.

OPEN SEPTEMBER & OCTOBER

- STROLL THROUGH OUR 20 ACRE APPLE ORCHARD
- PICK-YOUR-OWN-APPLES
- PUMPKIN PATCH
- LIVE ENTERTAINMENT
- TRACTOR RIDES THROUGH THE ORCHARD
- KOUNTRY KITCHEN & SNACK SHACK
- FARM FRIENDS
- KIDS ACTIVITIES
- CORN MAZE
- BIGGEST JUMP PAD IN WINDSOR-ESSEX COUNTY!
- AND SO MUCH MORE!

SAVE THE DATE!

DON'T MISS OUR SUPER FUN HALLOWEEN EVENT!



OCTOBER 24, 2026

Follow us on social media for all updates!

f @ 🎵 **THIESSENORCHARDS.COM | 519-326-5282**



10 ERIE ST. S. LEAMINGTON

BANKTHEATRE.COM



ONSITE UPCOMING

FARCE OF NATURE

A JONES HOPE WOOTEN COMEDY
DIRECTED BY MARK RIBBLE
FRIDAY/SATURDAY
DOORS 7:00 PM | SHOW 7:30 PM
SUNDAY - DOORS 1:30 PM | SHOW 2:00 PM
TICKETS \$25 + HST

**MAY
01, 02,
03,
08, 09,
10**

MONARCH CAFE

JUSTIN LATAM & FRIENDS IN THE
ROUND - NASHVILLE STYLE SONG SWAP
TICKETS \$15 GENERAL \$20 VIP +HST

05/15

DALE'S FRIDAY COFFEE HOUSE

SEASONED & EMERGING PERFORMERS

05/29

OFFSITE

MILL ST MARKETS

PRESENTED BY LEAMINGTON ARTS CENTRE, WITH
MUNICIPALITY OF LEAMINGTON & LEAMINGTON BIA
JUNE 12, JULY 10, AUGUST 14

MUSIC ONTHE42 SUMMER CONCERT SERIES

AT SUNSET® AMPHITHEATRE
PRESENTED BY MUNICIPALITY OF LEAMINGTON
DATES TO BE ANNOUNCED - STAY TUNED!

S'AINTS ROCK SEACLIFF 09/05

**OFFSITE EVENTS MUSIC CURATED BY THE BANK THEATRE

Chances
GAMING LOUNGE
& BISTRO

WE GOT GAME

BINGO!

18+

pod

TAP N PLAY

f

www.chancesgaminglounge.com

Play Smart

14 Mill Street East, Leamington, Ontario, N8H 1R7 519-322-2251

Make Thrift Part of the Trip.



MCC
THRIFT ON MILL

mccthriftontario.com/leamington
58 Mill St. W., Leamington

Find unique secondhand treasures at MCC Thrift on Mill.

Purposeful shopping that strengthens communities locally and globally.





ROMA CLUB

LEAMINGTON

*Thursday
Pasta Night*

4:30-7:00pm

- Dine in
- Take out
- Preorder



Luuch Buffet

**Tuesday to Friday
11:30am-1:30pm**

*Wood
Oven
Pizza*

**Tuesday
to Sunday**



Live Music

**Friday evenings
in the lounge**

*Open
to the
Public*

519.326.9539 • romaclub.ca

19 SEACLIFF DR. E., LEAMINGTON



**ORCHARD VIEW
GOLF CLUB**

A Short Drive From Anywhere in the County!

18 Challenging Holes & Driving Range

visit our website at
www.orchardviewgolf.com

1357 County Road 34
Ruthven ON 519-326-6993



47th
Annual

Ruthven Apple Festival

*Two unforgettable days
for the whole family!*



at Colasanti's Tropical Gardens

Sept. 26 & 27, 2026

Saturday & Sunday 9am - 5pm



Proudly named one of Ontario's Top 100 Festivals

Join us for two spectacular, fun-filled days
celebrating community, connection, and fall traditions.

WHAT YOU'LL EXPERIENCE:

- 100+ CRAFT & FOOD VENDORS
- LIVE ENTERTAINMENT
- FARMERS MARKET
- CLASSIC CAR SHOW (Sunday Only)

COMMUNITY LIVING

Essex County

Inspiring Possibilities



**Over \$1 million raised to support inclusion and opportunity
for people with intellectual disabilities in our community.**

Be part of the tradition - visit, volunteer, or learn more: communitylivingessex.org



Family Owned & Operated.

Specializing in home grown
produce at a fair price along with
many other treats that are all made
in southwestern Ontario.

*Honey, real maple syrup, fudge,
peanuts and much more.*



SUNRISE FARMS
LTD.

2190 SEACLIFF DR. KINGSVILLE • 519.326.5813



OVERVIEW

POPULATION: 22,100

- Kingsville is known for its quaint downtown area filled with restaurants, breweries and shops.
- In the late 19th century, Kingsville became a popular destination for Canadian and American tourists.
- Entrepreneur Hiram Walker established a rail line from Windsor to Kingsville and built the Mettawas Hotel in Kingsville in 1889.
- Jack Miner, known as “the father of conservation”, established his famous bird sanctuary in Kingsville in 1904.



Jack Miner Sanctuary

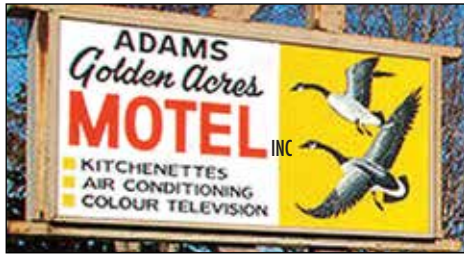
ATTRACTIONS

- Cedar Beach
- Cedar Island Marina
- Chrysler Greenway
- Jack Miner Migratory Bird Sanctuary
- Lakeside Park

For more information visit KINGSVILLE.CA and VISITKINGSVILLEONTARIO.CA.



Cedar Island Marina



- 26 COMFORTABLE UNITS •
- QUALITY ACCOMODATIONS AT AFFORDABLE RATES!

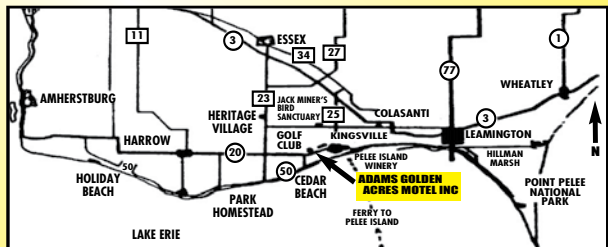
438 County Rd. 20, 1 Mile West of Downtown Kingsville ON N9Y 2K2

- Wireless Internet
- Cable TV
- Free calls to Canada and mainland United States
- Shaded picnic area & playground
- Easy access to Greenway Nature Trail, Golf and Curling Club
- Variety of rooms, kitchenettes, large suite, etc.
- Guest controlled air conditioning and heat • Cross ventilation
- Park at your door

Your Hosts Robert and Heather

519-733-6531

www.adamsgoldenacres.com



SOMETHING NEW IS TAKING FLIGHT...

QUELQUE CHOSE DE NOUVEAU PREND SON ENVOL...

Immersive conservation experiences and overnight stays on historic Jack Miner Bird Sanctuary grounds.

- > Hands-on bird banding
- > Overnight stays in the Sanctuary Lodge
- > Guided tours, history & behind-the-scenes access

Des expériences immersives en conservation et des séjours sur le site historique du Sanctuaire d'oiseaux Jack Miner.

- > Initiation au baguage des oiseaux
- > Séjours au Pavillon du Sanctuaire
- > Visites guidées, histoire et accès exclusif en coulisses

**SCAN TO
BOOK YOUR
EXPERIENCE**



**SCANNEZ POUR
RÉSERVER VOTRE
EXPIÉRIENCE**



Jack Miner
EXPERIENCES

EXPÉRIENCES DE
Jack Miner

Funded by the Federal
Economic Development
Agency for Southern Ontario

Financé par l'Agence fédérale
de développement économique
pour le Sud de l'Ontario



WANDER IN FOR A VISIT



**Learning Centre,
Historic House,
Self-Guided Historical
Tour, Trails and More!**

Grounds and trails are open year-round, sunrise to sunset.

*Contact us today
for a tour!*

332 Road 3 West, Kingsville, Ontario
www.jackminer.ca 519.733.4034

DETROIT

LAKE

WINDSOR

TECUMSEH

BELLE F

LASALLE

ESSEX

MCGREGOR

COTTA

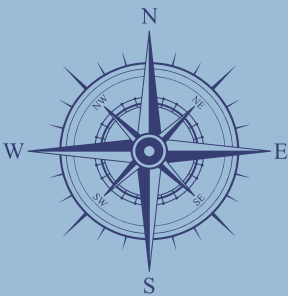
AMHERSTBURG

KINGSVILLE

HARROW

COLCHESTER

LAKE ERIE





ST. CLAIR

LIGHTHOUSE COVE

2

36

401

RIVER

401

77

COMBER

TILBURY

7

8

AM

37

3

77

34

WHEATLEY



LEAMINGTON

33

POINT PELEE



PELEE ISLAND



PELEE ISLAND

SINCE WINERY 1865

KINGSVILLE



455 Seacliff Drive
Kingsville, ON
519.733.6551
www.peleeisland.com



PELEE ISLAND

SINCE WINERY 1865

PAVILION

20 East West Road
Pelee Island, ON
519.724.2469



OVERVIEW

POPULATION: 1,000

- Cottam is a mostly residential hamlet with a growing number of shops and establishments.
- It is a popular residential area due to the town's central location in Essex County and its proximity to Highway 3, allowing for easy access to Windsor and other parts of the county.



Ridgeview Park Splashpad



Rotary Club Park

ATTRACTIONS

- Ridgeview Park
- Rotary Park

For more information visit KINGSVILLE.CA

**Nutritious,
healthy
and tasty!**

Sun Parlor Honey has it all!

**Sun Parlor
Honey**

Family Owned and operated since 1925

238 Cty. Rd. 14, RR #1, Cottam
sunparlorhoney.ca

519.839.4000

Monday – Saturday 9:00am – 5:00pm, Closed Sunday

OVERVIEW

POPULATION OF COLCHESTER: 2,300

POPULATION OF HARROW: 2,600

- Colchester has a rich history including involvement in the Proclamation of 1792, the War of 1812 and the Underground Railroad.
- Harrow is a community rich in agriculture.
- The town is a popular stop for those taking a trip to the local wineries.
- The Harrow Fair, established in 1854, is one of Ontario's oldest fairs. It runs Labour Day weekend and features events like tractor pull, horse show, lawnmower races, mom calling contest, pie auction, crafters alley, food and entertainment.



Colchester Beach



Harrow Fair

ATTRACTIONS

- Colchester Beach
- Colchester Marina
- Harrow Fair
- Walleye Derby
- Wineries

For more information visit TOURISMESSEX.CA and VISITHARROW.CA

Priscilla's PRESENTS

A little piece of heaven!

- One-of-a-kind Gifts
- Women's Apparel & Accessories • Baby
- Home & Garden Decor
- Bath & Body Products & More!



Outdoor Seating Available



Have a Milkshake or Ice Cream at...



Our nostalgic farm themed Ice Cream Parlour inside Priscilla's. Outdoor seating to relax & enjoy!



Washroom available for customers

Discover our Fabulous New Location on the Winery Route!

1195 Iler Road • HARROW • 519-738-0001 www.priscillas-presents.com

OVERVIEW

POPULATION: 3,060

- Wheatley is known as the “Freshwater Fishing Capital of the World”. It is the largest fresh water commercial fishing port in the world and it is home to a number of fish processing facilities.



Wheatley Arena Splash Pad

ATTRACTIONS

- Two Creeks Conservation Area
- Wheatley Arena Splash Pad
- Wheatley Harbour
- Wheatley Provincial Park



Two Creeks Conservation Area Summer Concert Series

For more information visit
CHATHAM-KENT.CA



www.camperscove.ca • info@camperscove.ca

1-800-265-5833 • 1-519-825-4732



61 Wooded Acres on Lake Erie • 1200 Feet of Sandy Beach
300 Spacious, Shady, Seasonal & Overnight Sites • Camping Cabins

wireless internet
30/50 amp
city water
sewers

pull thru
store & grill
laundromat
free hot showers

game room
controlled entrance
4 playgrounds
hiking trail

fishing
pedal cars
activities
and more



21097 Campers Cove Road
RR#1 Wheatley, Ontario NOP 2P0



RobinsonMotorcycle.com

BIKES • PRICES • PICS • SPECIALS

Service While You Wait!



FAMILY OWNED AND OPERATED SINCE 1958

2469 Talbot Trail E. Wheatley 519-825-4222 • RobinsonMotorcycle.com

WHEATLEY

TWO CREEKS

CONSERVATION ASSOCIATION

21638 KENT RD 1
WHEATLEY ON
TWO CREEKS.CA

VISIT WWW.TWOCREEKS.CA
FOR THE
SUMMER CONCERT SERIES LINEUP

- Outdoor Concerts Every Sunday Evening 6:00 pm - 8:30 pm starting June 7th through September 13th. All Welcome.
- Hiking and Cycling Trails • Birding • GPS Trails • Pavilion Rental
- Memorial Garden • Latrines • Tobogganing in Winter • Peace Garden

If you wish to make a donation to Two Creeks, we have charitable status.

OVERVIEW

POPULATION: 300 permanent residents / approximately 1,500 in summer

- Pelee Island is 30 km south of Leamington and covers 10,000 acres. It is 12.5 km long and 6 km wide.
- Pelee Island is known for its natural beauty and ecological importance. It is home to several unique plant and animal species, including the endangered Blue Racer snake and the Pelee Island sow-thistle, a rare flowering plant.

GETTING THERE

- The island is accessible by ferry service, with the ferry departing Leamington from April until late July, and after that leaving from Kingsville until early December.
- Cars can be brought over on the ferry; however, spaces are limited and often sell out.
- Pelee Island can also be accessed by personal watercraft or by flying into Pelee Island Airport.



Ferry to Pelee Island



Pelee Island Lighthouse

HISTORY

- Pelee Island was the home of Canada's first commercial winery, Vin Villa, founded in 1866. The island's climate and soil conditions are conducive to grape cultivation, making it an ideal location for viticulture.

FUN FACTS

- Pelee Island is home to some of the most provincially rare plants and animals.
- More than 300 species of birds have been spotted on Pelee Island.
- The annual Pelee Island Winery Half Marathon is Canada's most southerly half marathon. The popular event sells out quickly each year and has participants run around the island with the finish line at the winery.



Photo courtesy of the Corporation of the Township of Pelee

For more information visit PELEE.ORG

WITHIN AN HOUR



ENJOY FRESH

WALKERVILLE
BREWERY

DRINK LOCAL



OPEN
7 DAYS
A WEEK!



TAPROOM
BEER SHOP
KITCHEN



BREW HOUSE
PATIO
EVENT SPACE

525 ARGYLE RD WINDSOR, ONT. — WWW.WALKERVILLEBREWERY.COM

Town of LaSalle Events 2026



<p>April 18</p> <p>LaSalle Spring Fling</p>	<p>Last Sunday from May to September</p> <p>LaSalle Night Markets</p>	<p>June 11 to 14</p> <p>LaSalle Strawberry Festival</p>	<p>July 1</p> <p>LaSalle Canada Day Celebration</p>	<p>September 11 & 12</p> <p>LaSalle Last Call Before Fall</p>
<p>October 24</p> <p>LaSalle Truck or Treat</p>	<p>November 11</p> <p>LaSalle Remembrance Day Ceremony</p>	<p>November to January</p> <p>LaSalle Holiday Lights Heritage Nights</p>	<p>December 5</p> <p>LaSalle Breakfast with Santa & The Mayor</p>	<p>December 31</p> <p>LaSalle New Year's Eve Fireworks</p>



SCAN TO VIEW EVENTS WEB PAGE

Follow Us!

LaSalle Events

www.lasalle.ca/events



EVERYONE WELCOME!

SENIOR DAYS

MONDAY, WEDNESDAY & FRIDAY, ALL SEASON!

LOYALTY CARD 2026

SPECIAL RATES & KIDS GOLF FREE!

27 HOLES

GROUP OUTINGS

KITCHEN & BAR



519-676-1566

19605 Bloomfield Road, Blenheim
www.deerrungolfcourse.com

SHOP | DINE | SPEND | ENJOY

LOCAL

Visit Essex County,
we've got it all, and more!

Chris Lewis

MEMBER OF PARLIAMENT FOR ESSEX

CHRIS.LEWIS@PARL.GC.CA • 519-776-4700



PLEASE NOTE: The following is a list of events that were scheduled as of press time in early spring. As dates may change and events may be added or cancelled, please refer to the websites below for the most up-to-date information.

Municipality of Kingsville: kingsville.ca | visitkingsvilleontario.ca

Municipality of Leamington: leamington.ca

Visit Leamington: visitleamington.ca

Municipality of Essex: essex.ca

Municipality of Chatham-Kent: chatham-kent.ca | visitck.ca

Township of Pelee: pelee.org

Tourism Windsor Essex Pelee Island: visitwindsoreressex.com

EPIC Wineries: epicwineries.com

MAY



Leamington Fair

Festival of Birds
May 1 - 18
Point Pelee National Park

Leamington Fair
May 21 - 24
Leamington Fairgrounds



Festival of Birds

JUNE



Cottam Block Party

Cottam Block Party
June 20
Downtown Cottam

Lavender Festival
June 27
Colasanti's Tropical Gardens,
Ruthven

Lavender Festival
June 27 - 28
Serenity Lavender Farm, Harrow



Fish Festival

Wheatley Fish Festival
June 26 - 28
Wheatley Harbour, Downtown &
Arena



Canada Day

JULY

Canada Day Celebrations
July 1 - Canada Day Concert
Seacliff Park, Leamington
Kingsville Canada Day events



Canada Day

Arts At The Marina
July 25 - 26
Lakeside Marina, Leamington



Arts At The Marina

Kingsville Pro Rodeo
July 23 - 26
County Road 27, Woodslee



Rodeo



Hogs For Hospice

AUGUST

Big Boyz Fishing Derby
July 31 - August 3
Wheatley Harbour

Hogs For Hospice
July 31 - August 2
Seacliff Park, Leamington

Leamington Ribfest
July 31 - August 2
Seacliff Park, Leamington

Harrow Fair
August 27 - 30
Harrow Fairgrounds



Harrow Fair



Kingsville Music Festival



Ribfest

SEPTEMBER

Ruthven Apple Festival
Sept. 26 - 27
Colasanti's Tropical Gardens

OCTOBER

Migration Festival
October 15 - 18
Various locations, Kingsville



Migration Festival

MULTIPLE DATES

Two Creeks Concert Series
Every Sunday, June 7 - Sept. 13
Two Creeks Conservation Area

Marina Patio Nights
Friday nights in the summer
Leamington Marina

Music Onthe42 concert series
Every Saturday, June 27 - Sept. 12
(excluding July 25 & August 1)
Leamington's SUNSET®
Amphitheatre

Mill Street Market
June 12, July 10, Aug. 14
Mill Street, Leamington

Kingsville Block Party
July 18, Aug. 15, Sept. 19

Harness Racing
Aug. 9 - Oct. 25
Leamington Raceway



OnThe42 Concert Series



Harness Racing



Apple Festival



Mill Street Market



Kingsville Block Party



PARKS & GREEN SPACE

COLCHESTER

Colchester Park - 100 Jackson Street

COTTAM

Rotary Park - County Road 34
Ridgeview Park - 124 Fox Street

HARROW

Fairgrounds Park - 243 McAfee Street

KINGSVILLE

Cedar Creek Conservation Area - 1559 Arner Townline
Cedar Island Park & Beach - 851 Cedar Island Drive
Lakeside Park - 315 Queen Street
Kennedy Woods - 332 Road 3 West

LEAMINGTON

Hillman Marsh - 1826 Mersea Road 2
Kopegaron Woods - County Road 34
Mersea Park - 651 Point Pelee Drive
Point Pelee National Park - 1118 Point Pelee Drive
Seacliff Park - 24 Seacliff Drive West

WHEATLEY

Two Creeks Conservation Area - 21638 1 Kent Road
Wheatley Arboretum and Learning Trail - 196 Erie N.
Wheatley Provincial Park - 21116 Klondyke Road

CHRYSLER CANADA GREENWAY

The Chrysler Canada Greenway is a 48km multi-use trail that was previously an abandoned railway. The popular nature trail spans a large section of Essex County, passing through the communities of Ruthven, Kingsville and Harrow. It is most often used for hiking, biking, running and birding.

DOG PARKS

KINGSVILLE

Linden Beach Dog Park - 103 Golfview Drive
Repko Dog Park - 440 Road 2 East

LEAMINGTON

Rotary Leash Free Dog Park - 435 Bevel Line



Colchester Park



Point Pelee National Park



Chrysler Greenway



BEACHES

COLCHESTER

Colchester Park - 100 Jackson Street

KINGSVILLE

Cedar Beach Conservation Area - 1031 Heritage Road

Cedar Island Beach - 851 Cedar Island Drive

LEAMINGTON

Point Pelee National Park - 1118 Point Pelee Drive

Seacliff Park - 24 Seacliff Drive West

WHEATLEY

Getty's Beach - 22 Kay Avenue



Cedar Island Beach

SPLASH PADS

COLCHESTER

Colchester Park - 100 Jackson Street

COTTAM

Ridgeview Park - 124 Fox Street

HARROW

Fairgrounds Park - 243 McAfee Street

KINGSVILLE

Lakeside Park - 315 Queen Street

LEAMINGTON

Seacliff Park - 24 Seacliff Drive West

Mersea Park - 651 Point Pelee Drive

WHEATLEY

Wheatley Arena - 196 Erie Street North



Seacliff Park

PLAYGROUNDS

COLCHESTER

Colchester Park - 100 Jackson Street

COTTAM

Ridgeview Park - 124 Fox Street

HARROW

Fairgrounds Park - 243 McAfee Street

KINGSVILLE

Cedar Island Park & Beach - 851 Cedar Island Drive

Kingsville Recreation Complex - 1471 Jasperson Lane

Lakeside Park - 315 Queen Street

LEAMINGTON

Leamington Marina - 90 Robson Road

Mersea Park - 651 Point Pelee Drive

Seacliff Park - 24 Seacliff Drive West



Mersea Park Playground



Kingsville Recreation Complex



ART GALLERIES

KINGSVILLE

Carnegie Arts & Visitor Centre
28 Division Street South

LEAMINGTON

Leamington Arts Centre
72 Talbot Street West



Leamington Arts Centre

THEATRES

LEAMINGTON

The Bank Theatre
10 Erie Street South



The Bank Theatre

MUSEUMS

ESSEX

John R. Park Homestead
915 Essex County Road 50

KINGSVILLE

Canadian Transportation Museum
6155 Arner Townline

Kingsville Military Museum
145 Division Street South



John R. Park Homestead

CONCERT VENUES

KINGSVILLE

Grovedale Arts & Culture Centre
103 Park Street

LEAMINGTON

Leamington Marina and Rick Atkin Park
90 Robson Road

Sunset Amphitheatre
24 Seacliff Drive West

The Bank Theatre
10 Erie Street South

WHEATLEY

Two Creeks Conservation Area
21638 Kent Road 1



Sunset Amphitheatre

Discover the Piroli lifestyle

Piroli GROUP DEVELOPMENTS



Set along the shores of Lake Erie in Leamington, **Seacliff by Piroli** offers a vibrant, connected lifestyle surrounded by natural beauty.

Explore it all, scenic walking trails, sandy beaches, the marina, nearby Point Pelee National Park, premier golf courses, and local wineries all just moments from your door.

Find your perfect lifestyle at one of our communities.

Seacliff Heights 1 & 2

Modern, upscale rental apartments designed for active adults 55–75 who value style, simplicity, and freedom.

Seacliff Manor

An exceptional retirement residence for those 70+, offering personalized care in an elegant, welcoming setting.



seacliffheights.ca
1.844.747.0542



seacliff **MANOR**
BY PIROLI

seacliffmanor.ca
519.326.2624



Willistead Manor | Windsor



Where History & **Adventure Collide**

Step back in time and explore Windsor Essex
with the CROSSROADS Historical Guide at
visitwindsor.essex.com/crossroads.

